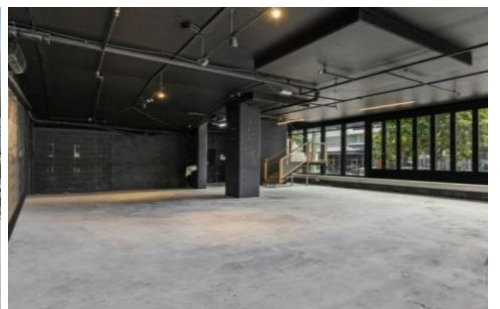
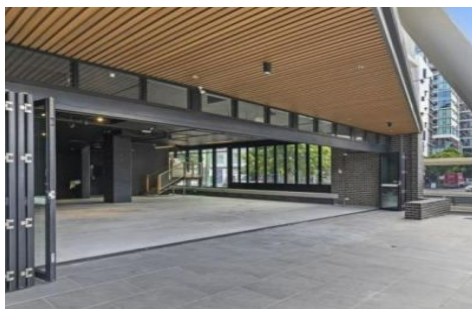
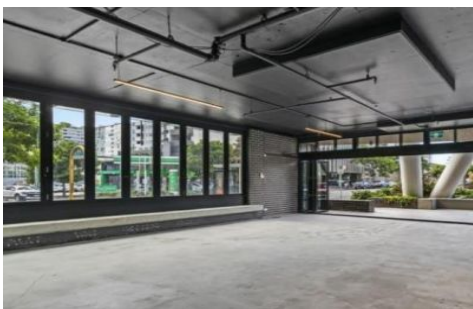




Commercial



1/27 Commercial Road NEWSTEAD QLD

11

Elders Commercial Brisbane are pleased to present to the market for lease an exciting ground floor opportunity Within Newstead. Offering 92m2-240m2 warm shell showroom/retail located on the prominent corner of Commercial Road and Leopold Street. Located just stones throw to the Gasworks precinct, James street, and other surrounding amenity, the property is situated within a highly sought after inner city precinct.

Key features of the property include:

- 92-240m2 blank canvas retail/showroom
- One (1) designated onsite car park
- Ten (10) visitor car parks
- Glass frontage shops

Type : Retail
Building Size : 240 sqm
View : <https://www.elderscommercialbrisbane.net.au/8475319>



Clinton Mallan
(07) 3252 4999



Will Kennedy
(07) 3252 4999

[For full version visit the website](https://www.elderscommercialbrisbane.net.au)

<https://www.elderscommercialbrisbane.net.au>

(07) 3252 4999