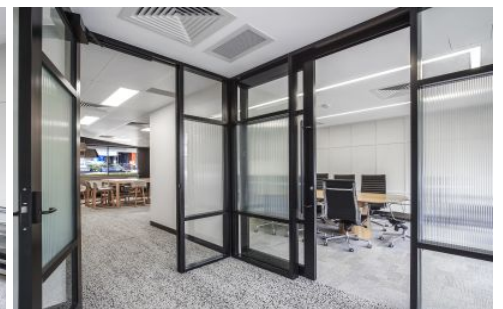




# Commercial



### 3/20 Douglas Street MILTON QLD

Elders Commercial Brisbane are pleased to present to the market for lease 3/20 Douglas Street, Milton. Presenting as 94m<sup>2</sup> of recently refurbished office accommodation, this property is well suited to a number of professional and/or creative users. Ideally positioned in the heart of Milton, this building boasts immediate access to food, beverage, retail and multiple public transport nodes.

Highlights of the property include;

- 94m<sup>2</sup> recently refurbished office tenancy
- Two (2) onsite car parks
- Excellent natural light throughout
- Separate boardroom
- Open plan workspace

[For full version visit the website](https://www.elderscommercialbrisbane.net.au)

**Type** : Offices  
**Building Size** : 94 sqm  
**View** : <https://www.elderscommercialbrisbane.net.au/8518984>



**Harry Urbahn**  
(07) 3252 4999



**Will Kennedy**  
(07) 3252 4999

<https://www.elderscommercialbrisbane.net.au>

(07) 3252 4999