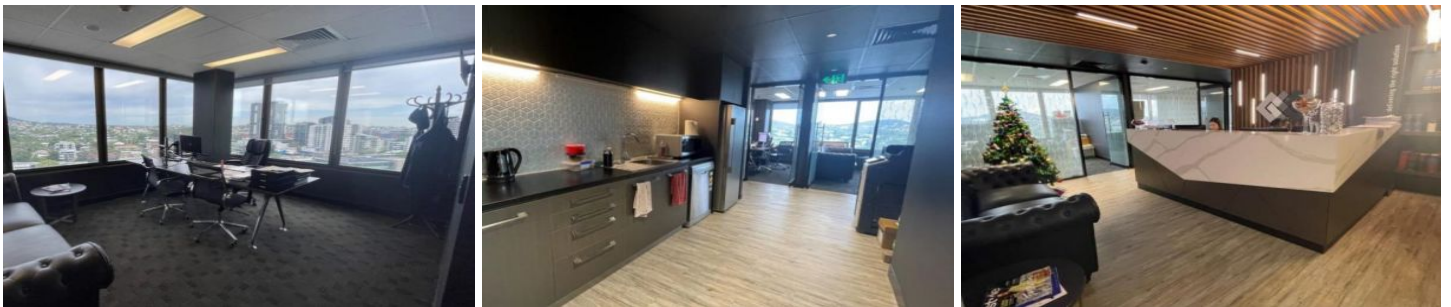




# Commercial



## Level 6 Suite 2/303 Coronation Drive MILTON QLD

Elders Commercial Brisbane are pleased to present to the market for lease a range of fully fitted office tenancies in the heart of Milton! Located along Coronation Drive the property offers 91m<sup>2</sup> - 139m<sup>2</sup> of professional office accommodation with private office, boardroom, reception area and kitchenette.

Key features of the property include;

- 91m<sup>2</sup> - 139m<sup>2</sup> functional office opportunities
- Executive offices and a generous boardroom
- Conveniently located in the Milton Business District
- Secure carparking and EOT facilities available
- Close proximity to rail, bus & ferry public transport
- Stones throw to the Brisbane CBD

**Type** : Offices  
**Building Size** : 91 sqm  
**View** : <https://www.elderscommercialbrisbane.net.au/8560143>



**Harry Urbahn**  
(07) 3252 4999



**Will Kennedy**  
(07) 3252 4999

[For full version visit the website](https://www.elderscommercialbrisbane.net.au)

<https://www.elderscommercialbrisbane.net.au>

(07) 3252 4999