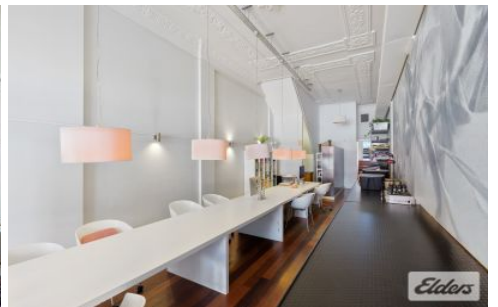




# Commercial



## 610 Stanley Street WOOLLOONGABBA QLD

Elders Commercial Brisbane are pleased to present to the market for lease a quality character offering in the heart of the Woolloongabba! 610 Stanley Street offers 100m2 functional ground floor office/retail with great exposure & immediate access to the thriving Stanley Street retail/commercial precinct.

Key features of the property include:

- 100m2 of functional office/retail
- Onsite car parking
- High exposure location with signage potential
- Located within the Mater medical precinct
- Walking distance to South Bank Station & Busy/Ferry services

**Type** : Offices  
**Building Size** : 100 sqm  
**View** : <https://www.elderscommercialbrisbane.net.au/8628265>



**Ben Hackett**  
(07) 3252 4999



**Charlie Greentree**  
07 3252 4999

[For full version visit the website](https://www.elderscommercialbrisbane.net.au)

<https://www.elderscommercialbrisbane.net.au>

(07) 3252 4999