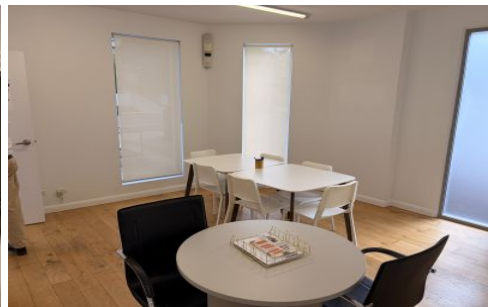
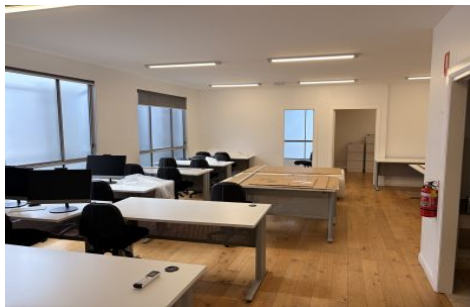
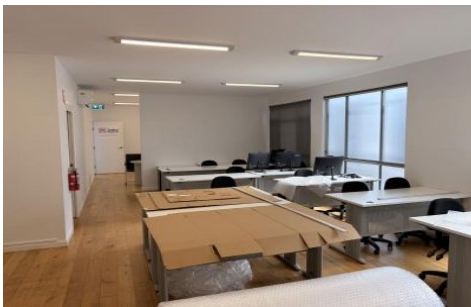




# Commercial



1/122 Lytton Road BULIMBA QLD

3

Elders Commercial Brisbane are pleased to present to the market for lease 1/122 Lytton Road, Bulimba. Presenting 100m<sup>2</sup> plug and play tenancy suited to a variety of office/medical uses. Strategically positioned within Bulimba's vibrant retail and dining precinct, the property benefits from strong surrounding amenity and is located just approximately 4km from the Brisbane CBD.

**Type** : Offices  
**Building Size** : 100 sqm  
**View** : <https://www.elderscommercialbrisbane.net.au/8629723>

Key features of the property include:

- 100m<sup>2</sup> fitted and open plan office
- Air conditioning throughout
- Three(3) Onsite car parks
- Ability for new tenants to purchase the existing NEW office furniture



**Ben Hackett**  
(07) 3252 4999



**Charlie Greentree**  
07 3252 4999

[For full version visit the website](https://www.elderscommercialbrisbane.net.au)

<https://www.elderscommercialbrisbane.net.au>

(07) 3252 4999