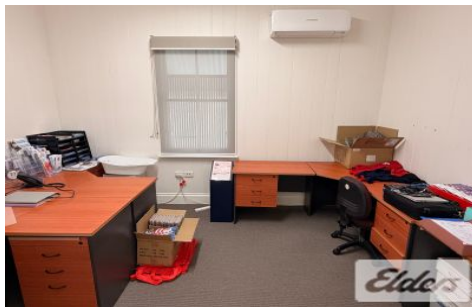




# Commercial



## 8 Arne Street WOOLLOONGABBA QLD



On offer is a pristine commercial character standalone tenancy next to Buranda train station and only a quick easy walk to Stones Corner central. Professional and creative users alike will suit this rare offering.

- \* 96sqm with 4 offices + reception
- \* Kitchen, 2 toilets and a shower
- \* Split system air-conditioning in every room
- \* Fully data cabled with patch panel.
- \* Security system and bared windows.
- \* In transport Hub.
- \* 7 Car Parks onsite

For more information or to arrange a private inspection, please contact your EXCLUSIVE Elders Commercial

**Type** : Offices  
**Building Size** : 96 sqm  
**View** : <https://www.elderscommercialbrisbane.net.au/8630766>



**Ben Hackett**  
(07) 3252 4999



**Charlie Greentree**  
07 3252 4999

[For full version visit the website](https://www.elderscommercialbrisbane.net.au)

<https://www.elderscommercialbrisbane.net.au>

(07) 3252 4999