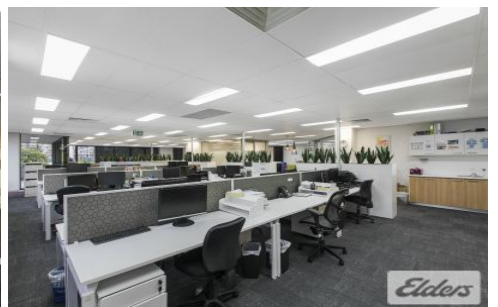
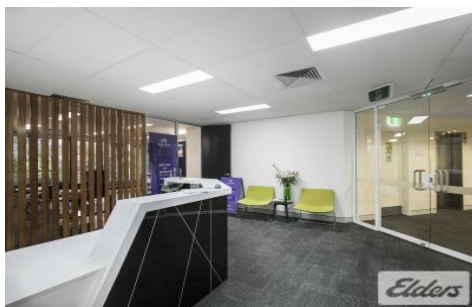




Commercial



Suite North/527 Gregory Terrace FORTITUDE VALLEY QLD

Elders commercial Brisbane are pleased to present to the market for lease Part Level 2 at 527 Gregory Terrace Fortitude Valley. The property is one of the best sub-lease spaces around with a brand new fit out in place. Situated on the corner of Gregory Terrace and Brunswick Street, this modern office tenancy is fully fitted out with reception, meeting room, boardroom, 3 offices and open plan work area with 30 workstations. The tenancy is lift accessible, has 2 large break out/balcony spaces, large kitchen area, end of trip facilities and onsite tennis courts and BBQ areas.

Key features of the property include:

Type : Offices
Building Size : 374 sqm
View : <https://www.elderscommercialbrisbane.net.au/8644193>



Clinton Mallan
(07) 3252 4999



Will Kennedy
(07) 3252 4999

[For full version visit the website](https://www.elderscommercialbrisbane.net.au)

<https://www.elderscommercialbrisbane.net.au>

(07) 3252 4999