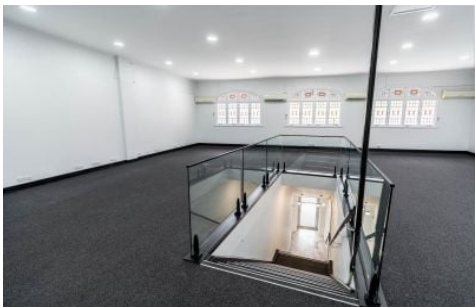




Commercial



582 Stanley Street WOOLLOONGABBA QLD

3

Elders Commercial Brisbane are pleased to present to the market for lease 582 Stanley Street, South Brisbane. Positioned directly opposite the Mater Hospital precinct, this brand-new 180m² self-contained tenancy offers a rare opportunity for medical, consulting or professional office users within one of Brisbane's most tightly held health and lifestyle precincts.

Type : Offices
Building Size : 180 sqm
View : <https://www.elderscommercialbrisbane.net.au/8703610>

Key features include:

- 180m² refurbished first floor office
- Ideal for consulting or office users
- Flexible layout with customisable fit-out options
- Brand-new kitchen and bathroom facilities
- Three (3) onsite car parks



Ben Hackett
(07) 3252 4999



Charlie Greentree
07 3252 4999

[For full version visit the website](https://www.elderscommercialbrisbane.net.au)

<https://www.elderscommercialbrisbane.net.au>

(07) 3252 4999